



TECOINSA

ROTARY DRILL

TP-50/400

For drilling with core sample, down the hole hammer and auger.



TECOINSA

TÉCNICAS Y CONSTRUCCIONES INDUSTRIALES S.A.



TECOINSA

EQUIPOS DE SONDEO S.A.

Transports dimensions



- Length: 7300 mm
- Height: 3300 mm
- Width: 2500 mm
- Weight without material: 14000 Kg

Dimensions depends on the model of the truck on which the rotary drill is mounted



TECOINSA

TÉCNICAS Y CONSTRUCCIONES INDUSTRIALES S.A.



TECOINSA

EQUIPOS DE SONDEO S.A.

Rotation head

- Type: CR-400
- Torque and rotation speed:
 - 1^a speed 0÷54 rpm 8021 Nm
 - 2^a speed 0÷154 rpm 2797 Nm
 - 3^a speed 0÷261 rpm 1653 Nm
 - 4^a speed 0÷748 rpm 576 Nm
- Hydraulic clamp: Ø50 mm
- Rotation head hollow shaft: Ø101 mm
- Slide head.
- Admissible rod: 42 a 90 mm (HQ)
- Have adapter for pipe coating.





TECOINSA

TÉCNICAS Y CONSTRUCCIONES INDUSTRIALES S.A.



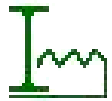
TECOINSA

EQUIPOS DE SONDEO S.A.

Injection pump



- Model: Major 100
- Pistons number: 3
- Aspiration: 1 1/4"
- Impulsion: 1"
- Speed: 540 rpm
- Flow: 0-100 l/min
- Working pressure: 40 bar
- Drive by hydraulic motor.
- Equipped with pressure gauge and safety valve.



TECOINSA

TÉCNICAS Y CONSTRUCCIONES INDUSTRIALES S.A.



TECOINSA

EQUIPOS DE SONDEO S.A.

Retainer- unscrewed



Retainer

- Diameter permissible: 42/170 mm
- Force: 9000 daN

Unscrewed

- Diameter permissible: 42/170 mm
- Force: 9000 daN
- Torque: 1400 daNm



TECOINSA

TÉCNICAS Y CONSTRUCCIONES INDUSTRIALES S.A.



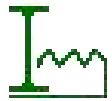
TECOINSA

EQUIPOS DE SONDEO S.A.

SPT



- Hammer weight: 63,5 Kg
- Fall height SPT: 760 mm
- Automatic positioning.
- Electronic beat counter.
- Automatic start.



TECOINSA

TÉCNICAS Y CONSTRUCCIONES INDUSTRIALES S.A.



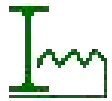
TECOINSA

EQUIPOS DE SONDEO S.A.

Mast

- Head run: 3400 mm
- Length: 5570 mm
- Telescopic maneuver: 6000 mm
- Push force: 1800 Kg
- Pull force: 6000 Kg
- The displacement of head along the mast is made though a chain of a high-strength.





TECOINSA

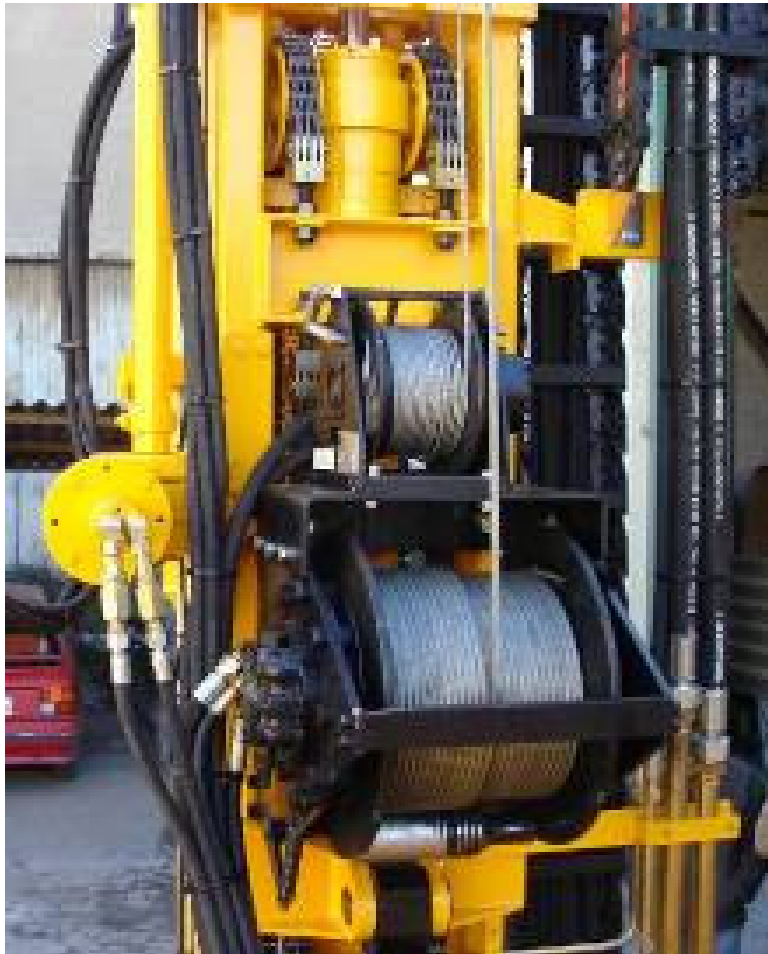
TÉCNICAS Y CONSTRUCCIONES INDUSTRIALES S.A.



TECOINSA

EQUIPOS DE SONDEO S.A.

Winch



Main winch

- Hydraulic winch.
- Force: 2500 Kg

SPT winch

- Hydraulic winch.
- Force: 400 Kg



TECOINSA

TÉCNICAS Y CONSTRUCCIONES INDUSTRIALES S.A.

Chassis

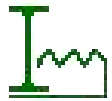


TECOINSA

EQUIPOS DE SONDEO S.A.

- Independent frame of the truck chassis, coupled with screws.
- 4 hydraulics leveling.
- Water tank capacity: 2000/3000 l. (varies with the carrying capacity of the truck)
- The machine contain box of tools.
- Area for transport of up to 3 meters for rods.





TECOINSA

TÉCNICAS Y CONSTRUCCIONES INDUSTRIALES S.A.



TECOINSA

EQUIPOS DE SONDEO S.A.

Hydraulic



- John Deere direct injection turbo diesel engine.
- Power: 113 CV
- Torque: 394 Nm/1400 rpm
- Engine cooler water.
- Diesel tank capacity: 80 l.
- Oil tank capacity: 315 l.
- Electrical system: Battery 12 V 125 A
- Hydraulics pumps:
 - Pump P-1: 80 l/min variable flow
 - Pumps P-2+P-3 20+11,2 l/min
 - Pumps P-4+P-5 27+27 l/min
- Head advance speed: 0/26 m/min
- Rolling speed winch: 24 m/min
- Centralized control panel.



TECOINSA

TÉCNICAS Y CONSTRUCCIONES INDUSTRIALES S.A.

Options



TECOINSA

EQUIPOS DE SONDEO S.A.



- Wire-line winch:
 - Max. pull: 1000 daN
 - Rope quantity: 300 m
 - Rope diameter: 6 mm
 - Hydraulic drive.
- Progressing cavity pumps suitable for heavy duty service:
 - Type: NM062-2
 - Pressure: 10 bar
 - Flow: 200 l/min
 - Speed: 230-240 rpm
 - Driven by hydraulic motor.